

# Add Value to your herd!

'Great bulls at Fair Prices'



## Erdman

Planet (Taboo) X Ramos (Rudolph)

Herdbook No.: 65000065801539  
A.I. Code: HO 1690  
KINGS-RANSOM ERDMAN CRI HCDO



Dam: Kings-Ransom Ramos Ekky

- No.1 PLI Daughter Proven Bull
- No.1 Lifespan Bull
- No.1 Holstein SCI Index
- A2 A2

PLI	£659
PLI Reliability	84%
Direct Calving Ease	+ 0.8%
Maternal Calving Ease	+ 1.2%
Dtrs/Herds	4162/600

Milk	+ 505 kgs
Fat Kg	+ 24.5
Fat %	+ 0.06
Protein Kg	+ 15.3
Protein %	- 0.01
Reliability	85%

### Price

Conv: £10.95

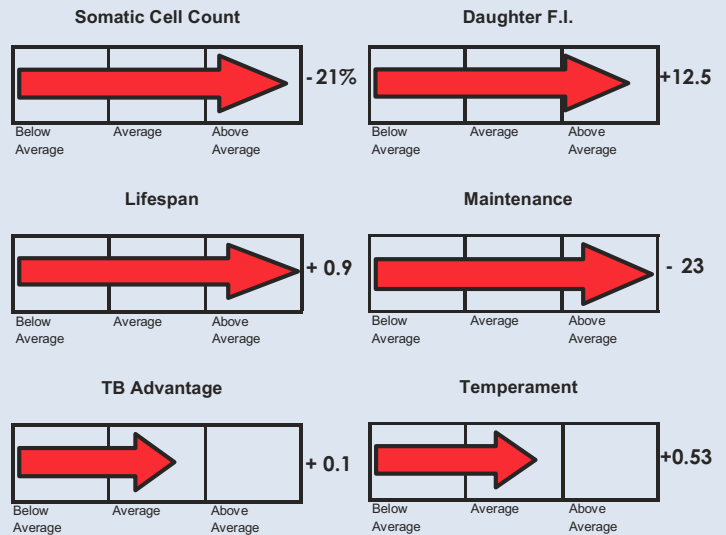
**Sexed: £23.50**

Linear Trait Profile December 2016

Type Proof Data Supplied by Holstein UK

Type Reliability: 82%

	-3	-2	-1	0	+1	+2	+3		
Type Merit								+0.38	Excellent
Legs & Feet								+0.18	Excellent
Mammary								+0.42	Excellent
Stature								-1.93	Short
Chest Width								-0.78	Narrow
Body Depth								-1.10	Shallow
Angularity								+0.01	Average
Rump Angle								-0.46	High Pins
Rump Width								-1.87	Narrow
Rear Leg Set								+0.94	Sickled
Foot Angle								-2.12	Low
Fore Udder Att								+0.05	Tight
Rear Udder Ht								-0.16	Very Low
Udder Support								+0.67	Strong
Udder Depth								-0.23	Below Hock
Front Teat Pl								+0.37	Close
Teat Length								-0.87	Short
Rear Teat Pl								+0.34	Close
Milking Speed								+0.55	Fast
Locomotion								+0.72	Excellent



# BullSemen.com

Part of the NMR Group

www.bullsemen.com

Offers end 6th March, 2017

Freephone: 0808 202 3230







**BullSemen.com**  
Part of the NMR Group



# Black Jack

Supershot (Supersire) X Numero Uno (Man o man)

Herdbook No.: 65003129037702

A.I. Code: HO4582

CO-OP AARDEMA BLACK JACK BLF BYF CVF DPF

● **Exceptional PLI**



- **PLI £711**
- **Health Trait Improver**
- **Medium Size, Good Strength**

PLI	£711
PLI Reliability	63%
Direct Calving Ease	0.6%
Maternal Calving Ease	1.8%
Dtrs/Herds	Genomic

Milk	+ 532 kgs
Fat Kg	+ 34.3
Fat %	+ 0.16
Protein Kg	+ 21.9
Protein %	+ 0.06
Reliability	67%

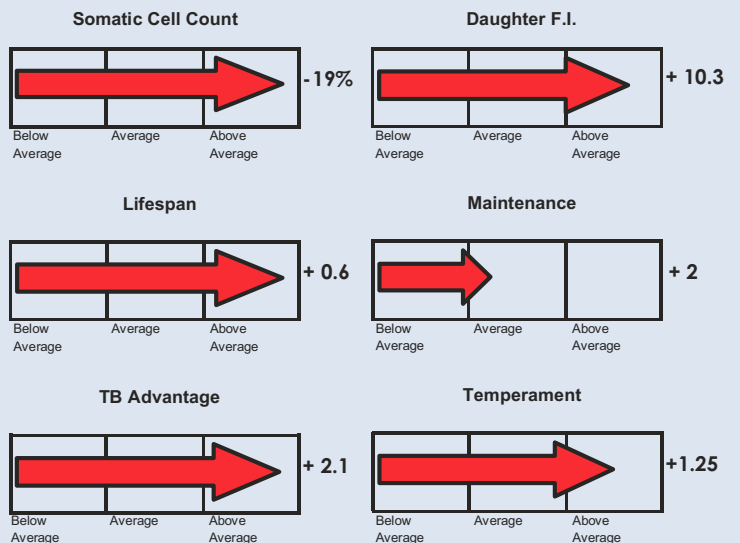
**Price**  
**£18.95**

Linear Trait Profile December 2016

Type Proof Data Supplied by Holstein UK

Type Reliability: 62%

Type Merit	-0	-0	-0	0	+0	+0	+0		
Type Merit								+2.09	Excellent
Legs & Feet								+1.49	Excellent
Mammary								+1.93	Excellent
Stature								+0.07	Tall
Chest Width								+0.19	Wide
Body Depth								-0.55	Shallow
Angularity								+0.00	Average
Rump Angle								+0.24	Low Pins
Rump Width								+1.44	Wide
Rear Leg Set								-0.14	Straight
Foot Angle								+0.25	steep
Fore Udder Att								+1.74	Tight
Rear Udder Ht								+1.41	Very High
Udder Support								+1.23	Strong
Udder Depth								+1.07	Deep
Front Teat Pl								+0.74	Close
Teat Length								-0.42	Short
Rear Teat Pl								+0.93	Close
Milking Speed								+0.19	Fast
Locomotion								+1.02	Excellent





**BullSemen.com**  
Part of the NMR Group



# Aftershock

Herdbook No.: 65000072044165

A.I. Code: HO3558

MORNINGVIEW AFTERSHOCK ET HCDO

**Galaxy (Freddie) X Bookem (Planet)**

## ● Production and Components Improver



- Milk +851 Kgs
- +59.2 Kgs Fat and Protein
- A2 A2

PLI	£534
PLI Reliability	66%
Direct Calving Ease	+ 0.2%
Maternal Calving Ease	+ 1.5%
Dtrs/Herds	Genomic

Milk	+ 851 kgs
Fat Kg	+ 30.9
Fat %	- 0.03
Protein Kg	+ 28.3
Protein %	+ 0.01
Reliability	68%

### Price

Conv: £12.00

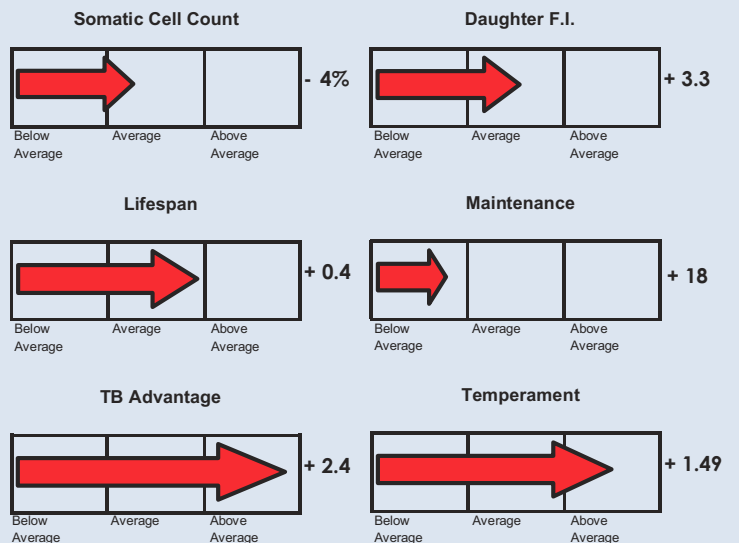
**Sexed: £24.75**

Linear Trait Profile December 2016

Type Proof Data Supplied by Holstein UK

Type Reliability: 68%

	-3	-2	-1	0	+1	+2	+3		
Type Merit								+2.37	Excellent
Legs & Feet								+2.27	Excellent
Mammary								+1.96	Excellent
Stature								+1.22	Tall
Chest Width								+1.40	Wide
Body Depth								+0.95	Deep
Angularity								+1.26	Angular
Rump Angle								-0.73	High Pins
Rump Width								+0.53	Wide
Rear Leg Set								+0.20	Sickled
Foot Angle								+0.80	Steep
Fore Udder Att								+1.40	Tight
Rear Udder Ht								+2.29	Very High
Udder Support								+2.03	Strong
Udder Depth								+0.60	Shallow
Front Teat Pl								+1.27	Close
Teat Length								+1.54	Long
Rear Teat Pl								+1.83	Close
Milking Speed								+0.70	Fast
Locomotion								+2.05	Excellent





**BullSemen.com**  
Part of the NMR Group



# Lantern

**NEW BULL  
FOR 2017**

Troy (Mogul) X Petrone (Super)

● **Health Trait Improver**

Herdbook No.: 65000074328780  
A.I. Code: HO4721  
LATUCH TROY LANTERN-ET



- Excellent Lifespan + 0.7
- Improves Type Merit + 2.63
- High Fertility Index + 12.9

PLI	£673
PLI Reliability	62%
Direct Calving Ease	0.9%
Maternal Calving Ease	1.7%
Dtrs/Herds	Genomic

Milk	+ 522 kgs
Fat Kg	+ 17.7
Fat %	- 0.03
Protein Kg	+ 18.5
Protein %	+ 0.02
Reliability	67%

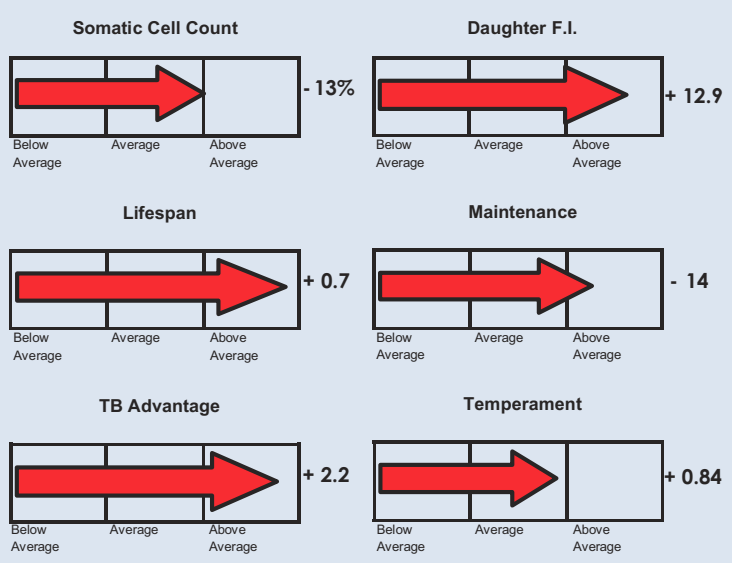
**Price**  
**£14.50**

Linear Trait Profile December 2016

Type Proof Data Supplied by Holstein UK

Type Reliability: 60%

	-3	-2	-1	0	+1	+2	+3		
Type Merit								+2.63	Excellent
Legs & Feet								+1.66	Excellent
Mammary								+2.47	Excellent
Stature								-0.71	Short
Chest Width								-0.95	Narrow
Body Depth								-1.45	Shallow
Angularity								-0.06	Average
Rump Angle								-0.42	High Pins
Rump Width								-1.37	Narrow
Rear Leg Set								+0.38	Sickled
Foot Angle								+0.23	Steep
Fore Udder Att								+2.38	Tight
Rear Udder Ht								+2.05	V. High
Udder Support								+1.56	Strong
Udder Depth								+2.23	Shallow
Front Teat Pl								+1.64	Close
Teat Length								+0.10	Long
Rear Teat Pl								+0.83	Close
Milking Speed								+0.54	Fast
Locomotion								+1.41	Excellent









**BullSemen.com**  
Part of the NMR Group

**NEW BULL  
FOR 2017**

# Geronimo

Supershot (Supersire) X AltaAgency (Dorcy)

Herdbook No.: 72019991371230  
A.I. Code: HO4760  
IDEVRA ROYAL GERONIMO ET TL TY

**Excellent Lifespan**



- Low Stature with Strength
- PLI £694
- Health Trait Improver

PLI	£694
PLI Reliability	63%
Direct Calving Ease	0.8%
Maternal Calving Ease	1.2%
Dtrs/Herds	Genomic

Milk	+ 778 kgs
Fat Kg	+ 32.1
Fat %	+ 0.02
Protein Kg	+ 23.0
Protein %	- 0.03
Reliability	67%

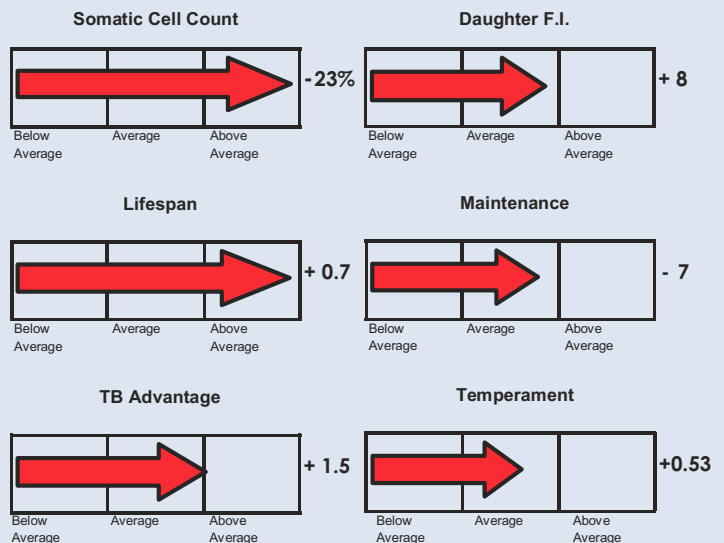
**Price**  
**£16.95**

Linear Trait Profile December 2016

Type Proof Data Supplied by Holstein UK

Type Reliability: 60%

	-3	-2	-1	0	+1	+2	+3		
Type Merit								+2.15	Excellent
Legs & Feet								+2.09	Excellent
Mammary								+1.83	Excellent
Stature								-1.45	Short
Chest Width								+0.54	Wide
Body Depth								-0.70	Shallow
Angularity								-1.15	Coarse
Rump Angle								+0.21	Low Pins
Rump Width								+0.28	Wide
Rear Leg Set								-0.51	Straight
Foot Angle								+0.86	Steep
Fore Udder Att								+1.79	Tight
Rear Udder Ht								+1.52	V. High
Udder Support								+0.93	Strong
Udder Depth								+0.86	Shallow
Front Teat Pl								+0.95	Close
Teat Length								-0.50	Short
Rear Teat Pl								+0.33	Close
Milking Speed								+0.89	Fast
Locomotion								+0.69	Excellent





**BullSemen.com**  
Part of the NMR Group

**NEW BULL  
FOR 2017**

# Cheyenne

Herdbook No.: 72021002133916  
A.I. Code: HO4790  
INSEME SUPERSHOT CHEYENNE TL

**Supershot (Supersire) X McCutchen (Bookem)**

● From the Cosmopolitan Family

● High PLI £707

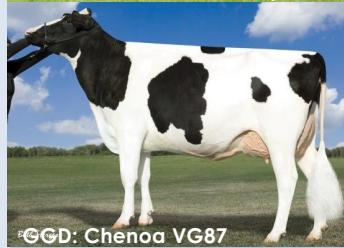
● Larcrest Crimson -  
HI Cow of the Year 2016



Larcrest Crimson EX92 GMD *Both Herzes*



Cheyenne



GGD: Chenoa VG87



Oberhuber McCutchen Cassie : Dam

**Price**  
**£17.95**

Larcrest Cosmopolitan  
(Picston Shottle)

▼  
Larcrest Crimson  
(Ramos)

▼  
Larcrest Chenoa  
(Ensenada Taboo Planet)

▼  
Larcrest Cache  
(Badger-Bluff Fanny  
Freddie)

▼  
Cassie  
(De-Su BKM McCutchen)

▼  
Inseme Supershot  
Cheyenne  
(Cogent Supershot)

PLI	£707
PLI Reliability	62%
Direct Calv-	0.6%
Maternal	1.9%
Calving Ease	
Dtrs/Herds	Genomic

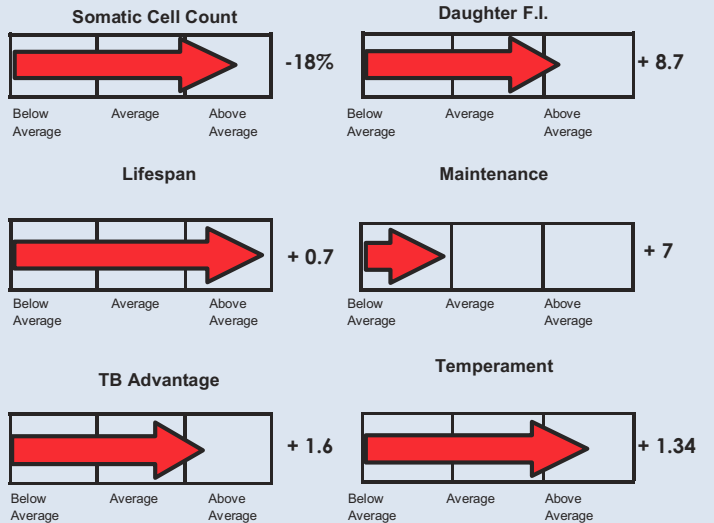
Milk	+ 677 kgs
Fat Kg	+ 32.8
Fat %	+ 0.07
Protein Kg	+ 25.2
Protein %	+ 0.04
Reliability	67%

Linear Trait Profile December 2016

Type Proof Data Supplied by Holstein UK

Type Reliability: 58%

Type Merit	-3	-2	-1	0	+1	+2	+3	Value	Quality
Legs & Feet								+2.46	Excellent
Mammary								+1.16	Excellent
Stature								-0.51	Short
Chest Width								+1.48	Wide
Body Depth								+0.33	Deep
Angularity								-0.58	Coarse
Rump Angle								-1.44	High Pins
Rump Width								-0.08	Average
Rear Leg Set								-0.76	Straight
Foot Angle								+1.33	Steep
Fore Udder Att								+1.19	Tight
Rear Udder Ht								+0.75	High
Udder Support								+0.48	Strong
Udder Depth								+0.18	Shallow
Front Teat Pl								+0.04	Average
Teat Length								+1.72	Long
Rear Teat Pl								-0.71	Apart
Milking Speed								+0.37	Fast
Locomotion								+0.98	Excellent



**BullSemen.com**  
Part of the NMR Group

**Freephone:**

**0808 202 3230**